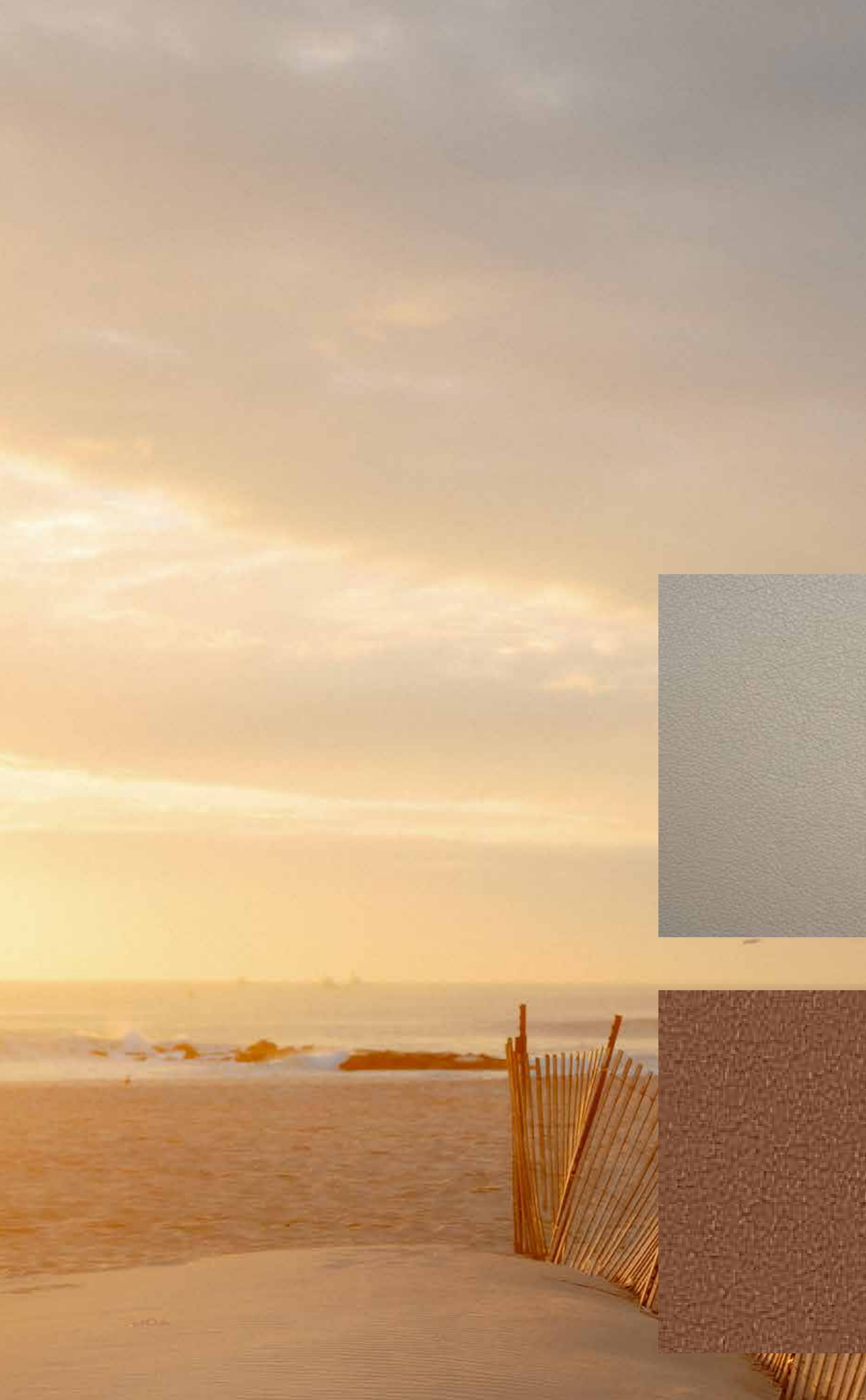


SUSTAINABLE LEATHER®
DANI



Doge

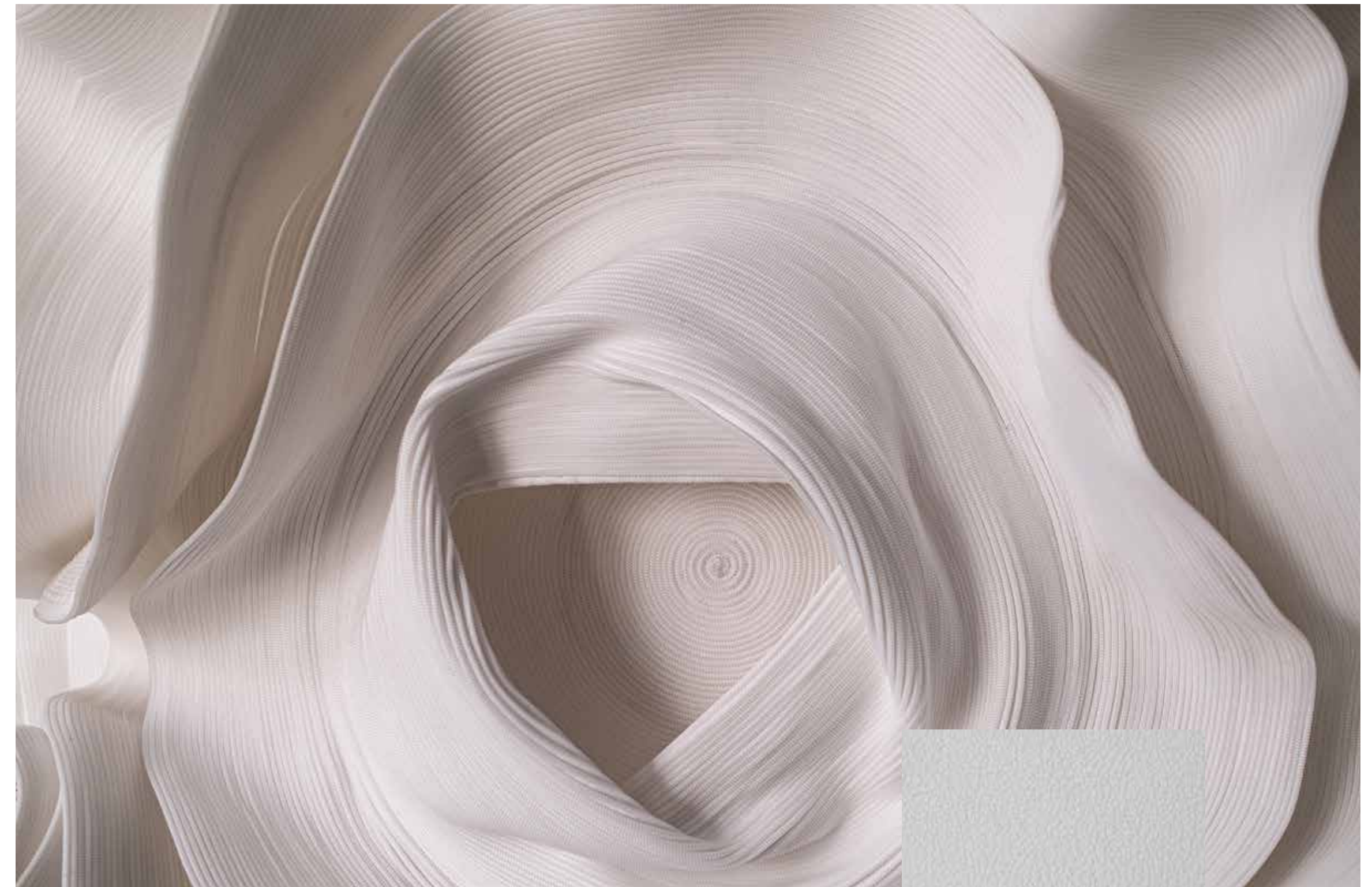
collection



Beige



Cuoio

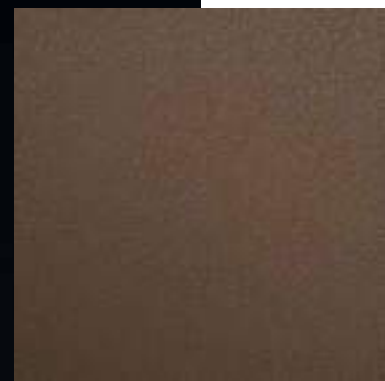


Bianco

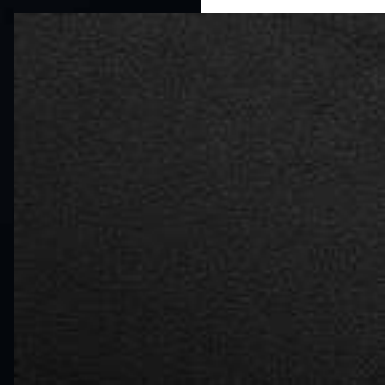
Classic and elegant. Doge is a full grain leather exalted by its natural grain. It is silky to the touch, with an embracing, soft hand, ideal for modern sofas and lounge chairs.



Oliva



Caramello



Fondente

Available colors range



Bianco



Beige



Cenere



Caramello



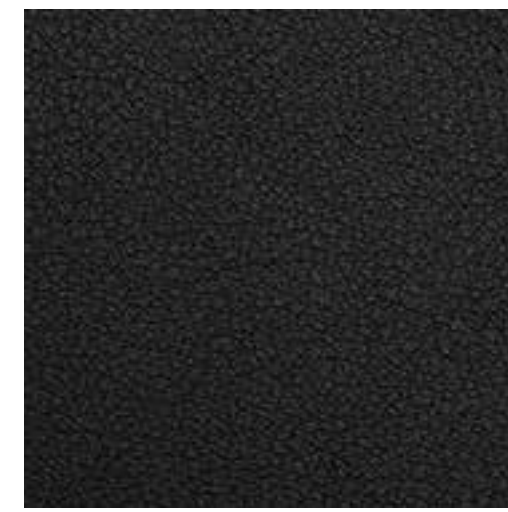
Antracite



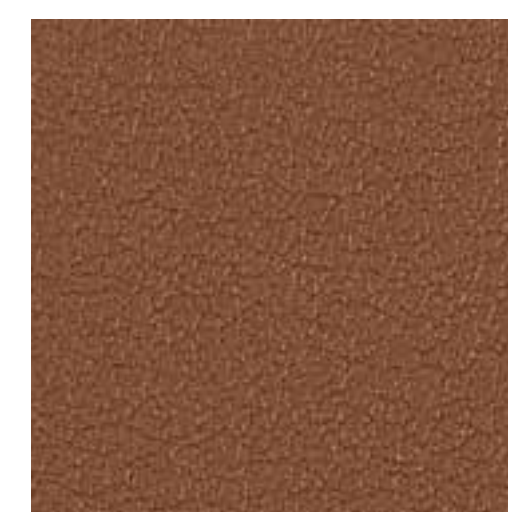
Taupe



Tabacco



Fondente



Cuoio



Marrone



Oliva



Orione



Grigio

Doge

Application: Leather goods,
furniture & contract

Thickness: 1.1 - 1.3 mm

Leather size: Full

Colors : 13 colors available

Typology: Semi-aniline, full grain,
through dyeing aniline

Tanning: Chromium salts

Features: Emotional leather

