

SUSTAINABLE LEATHER®

**DANI**

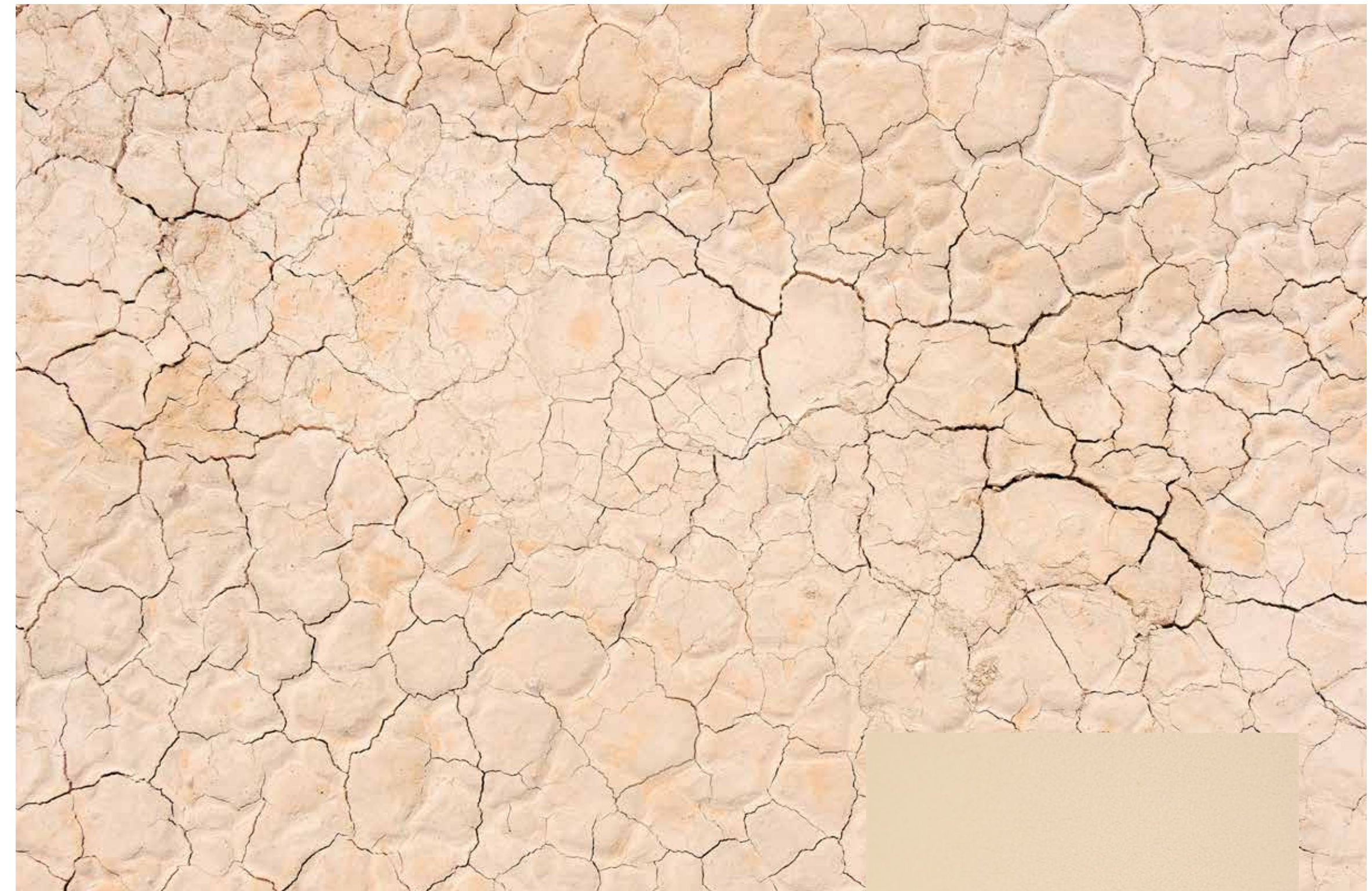


**New  
Madame**

*GG'25 collection*



Red  
Dahlia

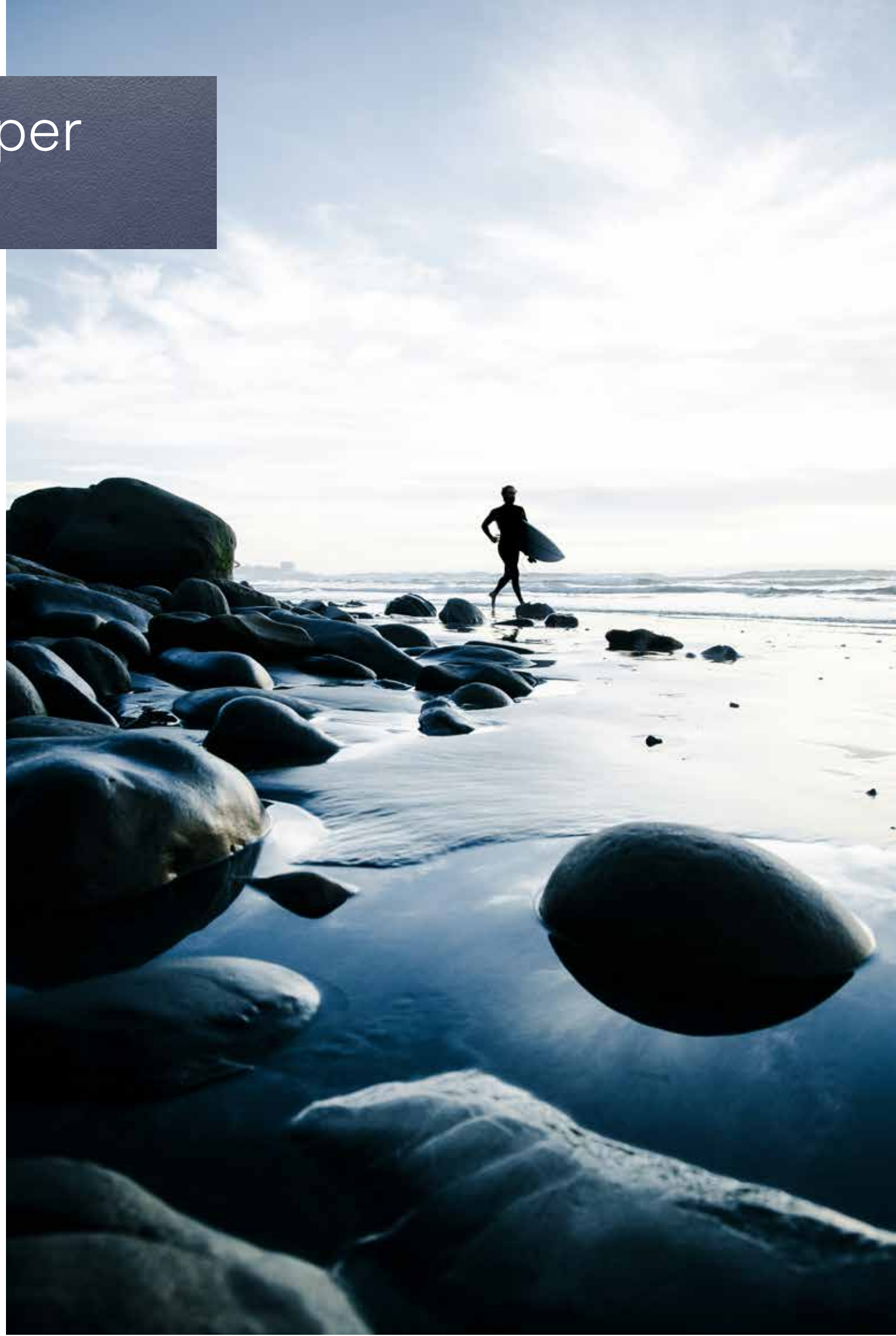


Torrone

**Leggermente lucida e con una grana fine,  
compatta e resistente.**

*Slightly shiny and fine grained, compact  
and durable.*

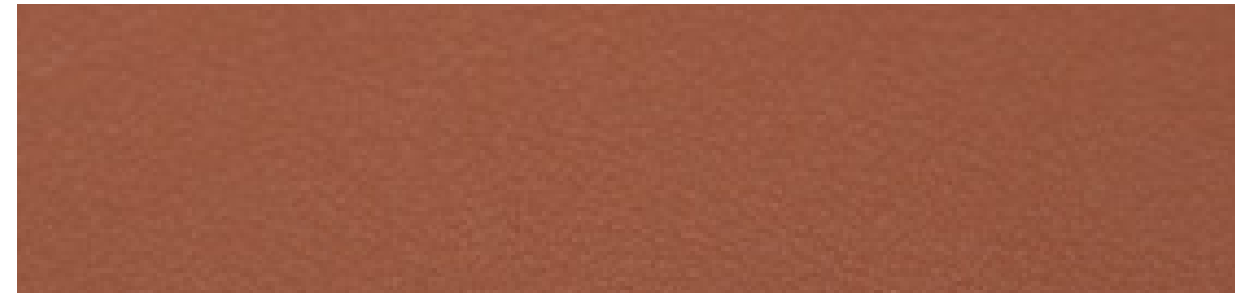
Skipper  
Blue



Nero



Cuoio



Available colours range



Torrone



Tortora



Red Dahlia



Skipper Blue



Cuoio



Nero

# New Madame

**APPLICAZIONI**  
*APPLICATIONS*

Pelletteria, calzatura  
*Leather goods, footwear*

**SPESSORE**  
*THICKNESS*

1.4 - 1.6 mm

**DIMENSIONE PELLE**  
*LEATHER SIZE*

Intera  
*Full*

**COLORI**  
*COLORS*

6 colori disponibili  
*6 colors available*

**TIPOLOGIA**  
*TPOLOGY*

Semi-anilina, pieno fiore, tintura all'anilina passante in botte  
*Semi-aniline, full grain, through dyeing aniline*

